



## Instruction Sheet for Technology Worksheet Level 1 (Ages 5-6)

### Points to note for Museum Guides/Teachers

Aim: This worksheet aims to get students thinking about how life was different when the Cable Car was built.

House Keeping: Ideally teachers and students will have had the worksheets sent to them before they visit.

### Once the group has arrived inside the Museum

Sit the group down if possible, before talking to them.

Keep the welcome and introduction to 5 minutes at a maximum, including introducing the worksheet if this hasn't been done at school.

Museum Guide/Teacher Introduction: Ask the students to look at the worksheet and pick out the tools that were used to build the Cable Car track.

Main ideas to emphasise with this age group:

- Life was different and to explain how
- Tools were different

Explain to the students that they are going to complete their own worksheet. Tell them it will involve:

- Looking at pictures
- Looking for real objects

Hand out the worksheet and then go through it with the group if they have not seen it before. Ask if they have any questions.

Send them off to complete the tasks, moving around to keep them focussed.

Once the time allotted is up bring them back together and ask for answers.

# Welcome to the Wellington Cable Car Museum

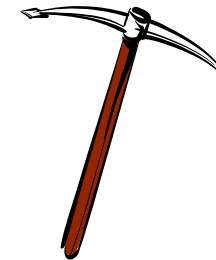
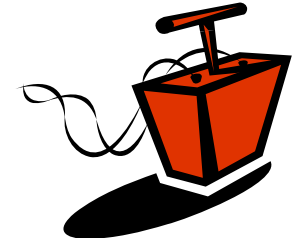
Find the answers on the way up in Cable Car and inside the Museum at the top.

Technology Level 1 (ages 5-6)  
Technological Practice  
Nature of Technology

1. Tick things as you find them and then draw a line to match the new to the old.



2. Circle the things used to build the Cable Car track .



Check your answers with the information on the top floor and the objects on the ground floor.

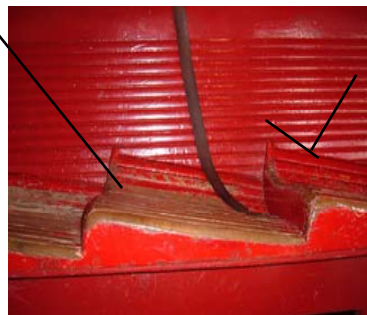
# Welcome to the Wellington Cable Car Museum

Find the answers on the way up in Cable Car and inside the Museum at the top.

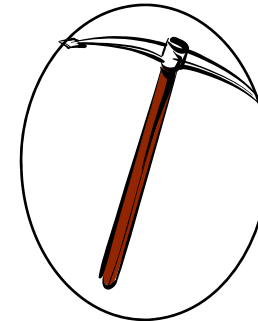
Technology Level 1 (ages 5-6)  
 Technological Practice  
 Nature of Technology

ANSWER SHEET

1. Tick things as you find them and then draw a line to match the new to the old.



2. Circle the things used to build the Cable Car track .



Check your answers with the information on the top floor and the objects on the ground floor.